



**FUJI**  
**ELECTRIC**

**SPLIT TYPE**  
**ROOM AIR CONDITIONER**  
**WALL MOUNTED** type

# SERVICE MANUAL

## Models

Indoor unit	Outdoor unit
RSW-9RC	ROW-9RC
RSW-12RC	ROW-12RC

## CONTENTS

SPECIFICATIONS .....	1
DIMENSIONS .....	3
REFRIGERANT SYSTEM DIAGRAM .....	5
CIRCUIT DIAGRAM .....	6
INDOOR PRINTED CIRCUIT BOARD CIRCUIT DIAGRAM .....	7
ERROR DISPLAY .....	8
DISASSEMBLY ILLUSTRATION .....	9
PARTS LIST .....	13
STANDARD ACCESSORIES .....	15



Большая библиотека технической документации

<https://splitsystema48.ru/instrukcii-po-ekspluatácii-kondicionerov.html>

каталоги, инструкции, сервисные мануалы, схемы.

# SPECIFICATIONS

MODEL	IN	RSW-9RC	RSW-12RC
	OUT	ROW-9RC	ROW-12RC
TYPE		COOLING & HEATING	COOLING & HEATING
COOLING CAPACITY	kW	2.50	3.25
HEATING CAPACITY	kW	2.95	3.80

## ELECTRICAL DATA

POWER SOURCE		230V 50Hz	230V 50Hz
RUNNING CURRENT (A)	COOL	4.8	6.2
	HEAT	4.3	5.7
INPUT WATTS (kW)	COOL	1.00	1.31
	HEAT	0.86	1.22
E.E.R. (kW/kW)	COOL	2.50	2.48
	HEAT	3.43	3.11
MOISTURE REMOVAL (ℓ/hr)		1.3	1.8
AIR CIRCULATION-HI (m <sup>3</sup> /hr)		COOL 540 HEAT 515	COOL 535 HEAT 545

## COMPRESSOR

TYPE	Hermetic type, Permanet split condenser, 2 pole, Single phase, Induction motor		
DISCRIMINATION		80603745	80679045Z, 80679045N
POWER SOURCE		220, 230, 240V / 50Hz	220, 230, 240V / 50Hz
REFRIGERANT R-22 (g)		650	770

## FAN MOTOR

POWER SUPPLY (V)		230	230
INDOOR UNIT (r.p.m.)	HI-SPEED	COOL 1310 HEAT 1250	COOL 1310 HEAT 1330
	MED-SPEED	COOL 1170 HEAT 1140	COOL 1200 HEAT 1210
	LO-SPEED	COOL 1030 HEAT 1020	COOL 1090 HEAT 1090
	QUIET	COOL 900 HEAT 900	COOL 980 HEAT 980
OUTDOOR UNIT (r.p.m.)		800	770

## DIMENSIONS

INDOOR UNIT	H x W x D (mm)	257 x 808 x 187	257 x 808 x 187
OUTDOOR UNIT	H x W x D (mm)	535 x 650 x 250	535 x 695 x 250

## WEIGHT

INDOOR UNIT	NET / GROSS (kg)	10 / 8	10 / 8
OUTDOOR UNIT	NET / GROSS (kg)	28 / 25	34 / 31

## NOISE LEVEL

INDOOR UNIT (dB)	HI-SPEED	COOL 39 HEAT 37	COOL 40 HEAT 40
	MED-SPEED	COOL 35 HEAT 34	COOL 39 HEAT 39
	LO-SPEED	COOL 33 HEAT 31	COOL 37 HEAT 37
	SUPER QUIET	COOL 29 HEAT 27	COOL 34 HEAT 34
OUTDOOR UNIT (dB)		COOL 46 HEAT 46	COOL 47 HEAT 48

## ADDITIONAL CHARGE OF REFRIGERANT

Refrigerant suitable for a piping length of 7.5m is charged in the outdoor unit at the factory.

When the piping is longer than 7.5m, additional charging is necessary. For the additional amount, see the table below.

### ASY9RSJCW /AOY9RSJC

Pipe length	7.5m	10m
Additional refrigerant	None	40g

Between 7.5m and 10m, when using a connection pipe other than that in the table, charge additional refrigerant with 16g/1m as the criteria.

(The maximum length of the piping is 10m. If the units are further apart than this, correct operation can not be guaranteed.)

### ASY12RSJCW / AOY12RSJC

Pipe length	7.5m	10m	15m
Additional refrigerant	None	40g	120g

Between 7.5m and 15m, when using a connection pipe other than that in the table, charge additional refrigerant with 16g/1m as the criteria.

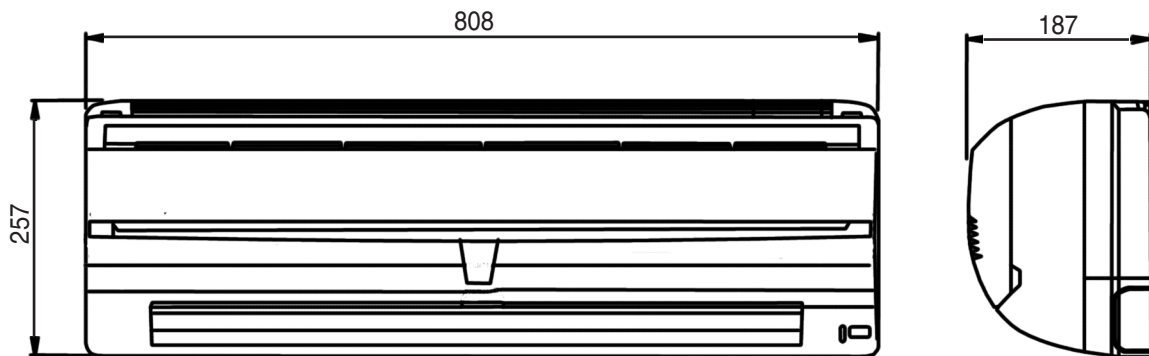
(The maximum length of the piping is 15m. If the units are further apart than this, correct operation can not be guaranteed.)

# D I M E N S I O N S

## INDOOR UNIT

Models : RSW-9RC  
RSW-12RC

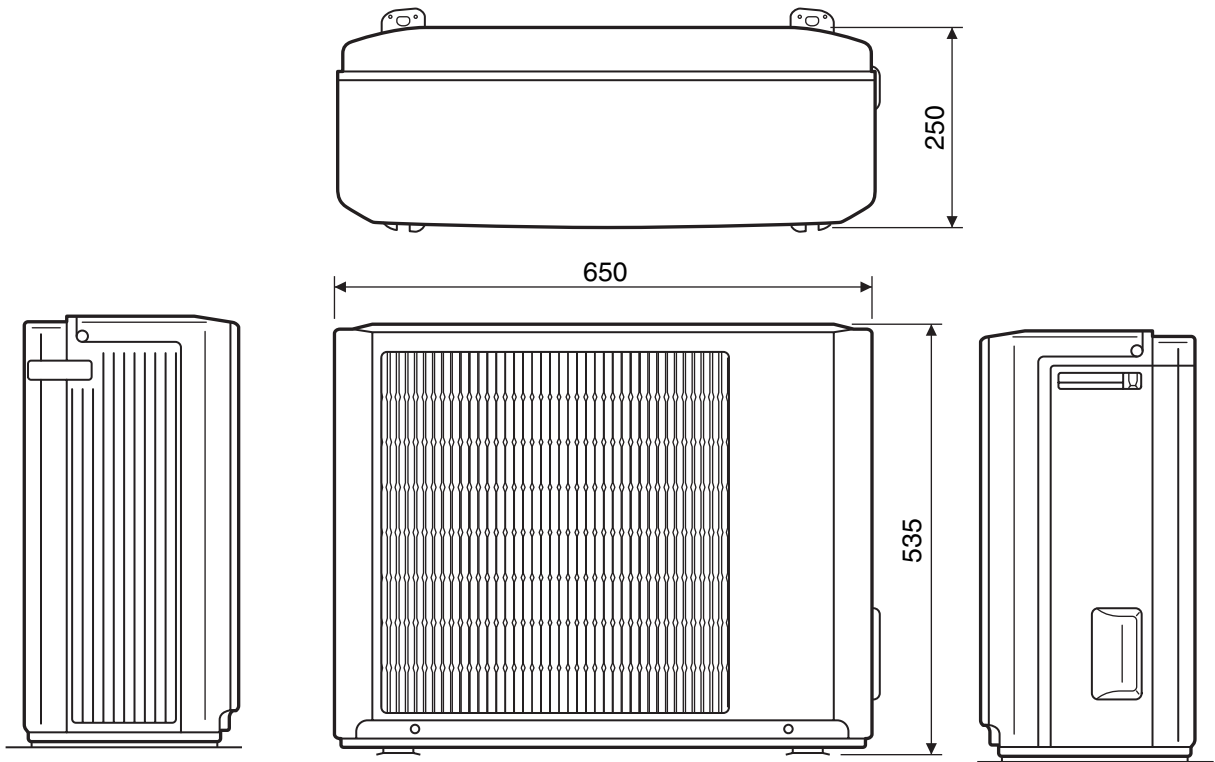
Unit : mm



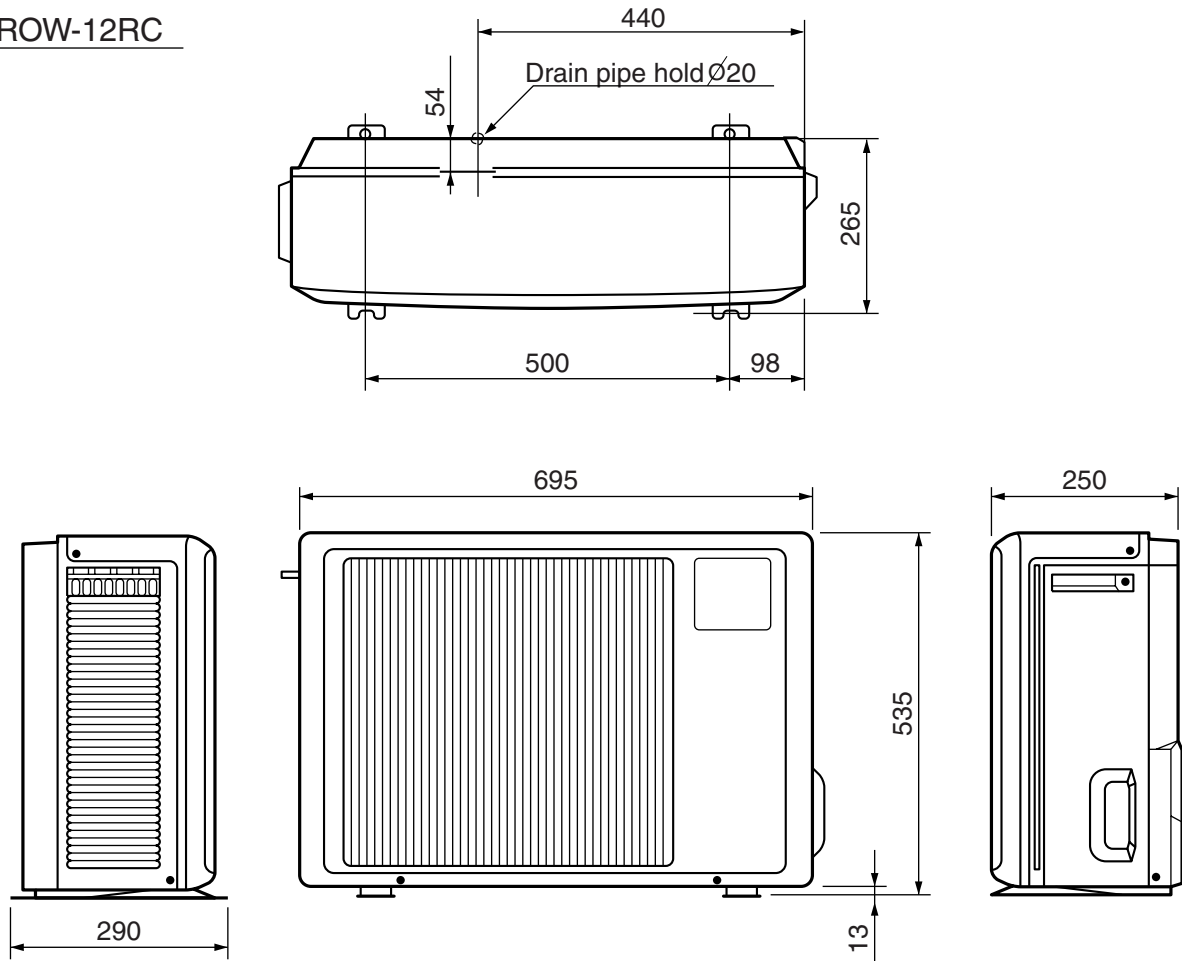
# OUTDOOR UNIT

Model : ROW-9RC

Unit : mm

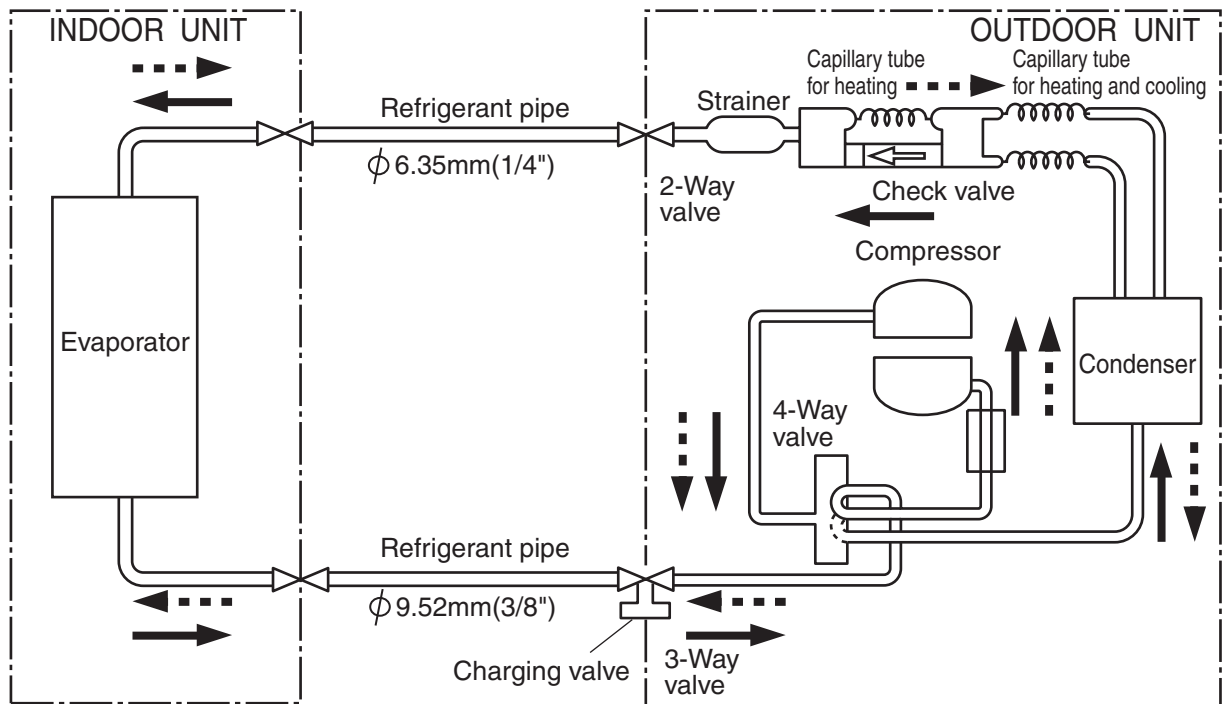


Model : ROW-12RC

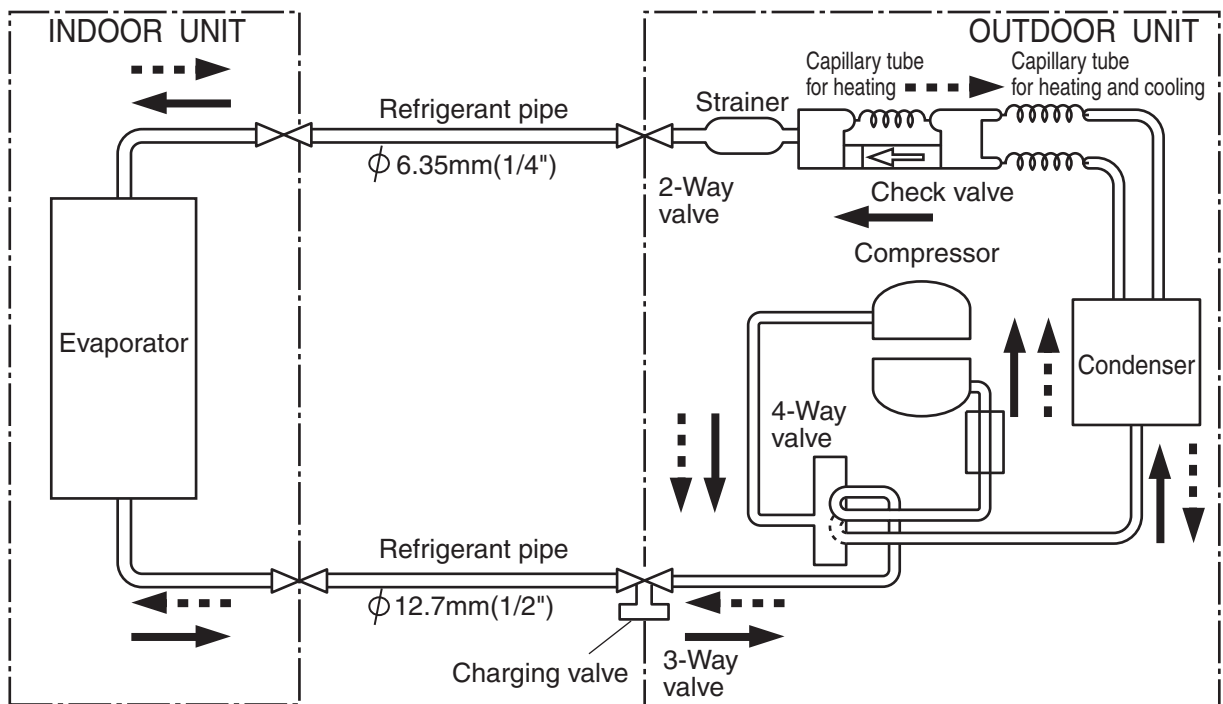


# REFRIGERANT SYSTEM DIAGRAM

**Models : RSW-9RC / ROW-9RC**

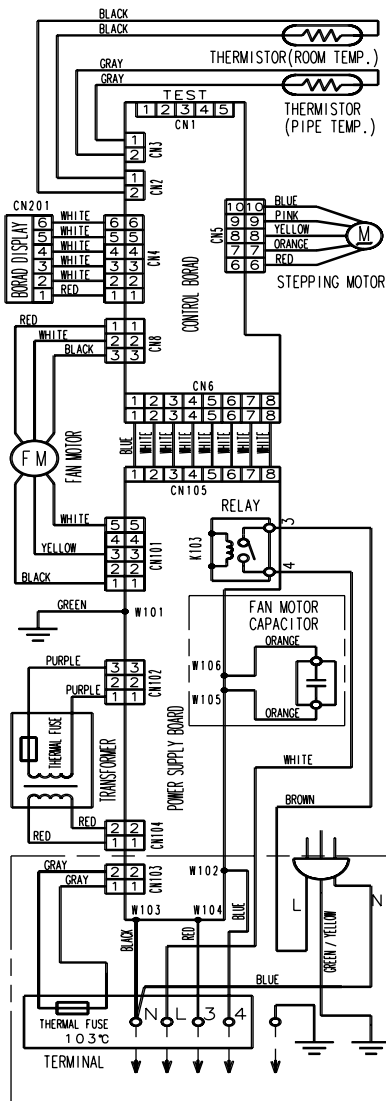


**Models : RSW-12RC / ROW-12RC**

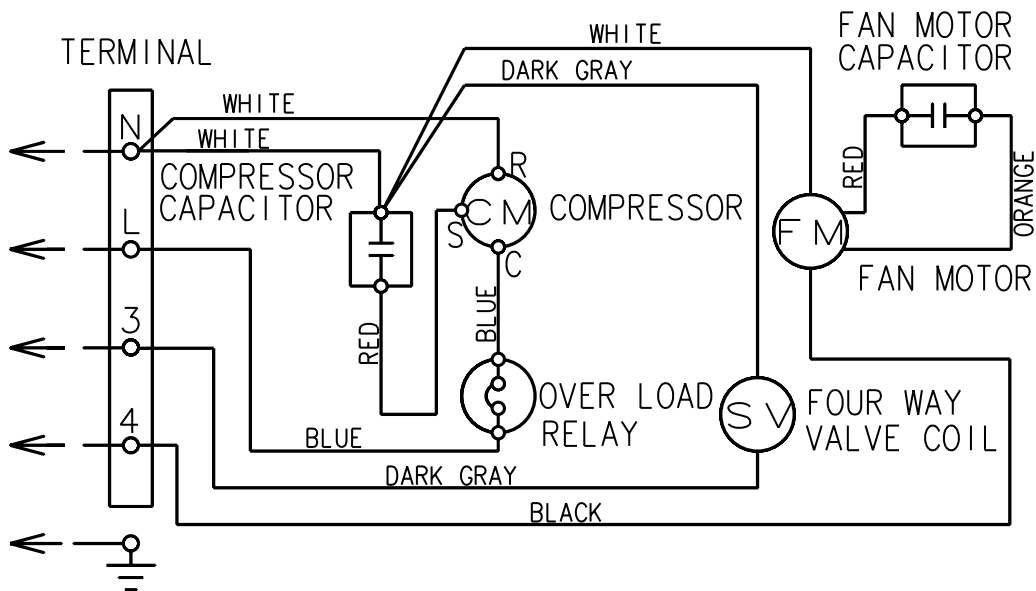


# CIRCUIT DIAGRAM

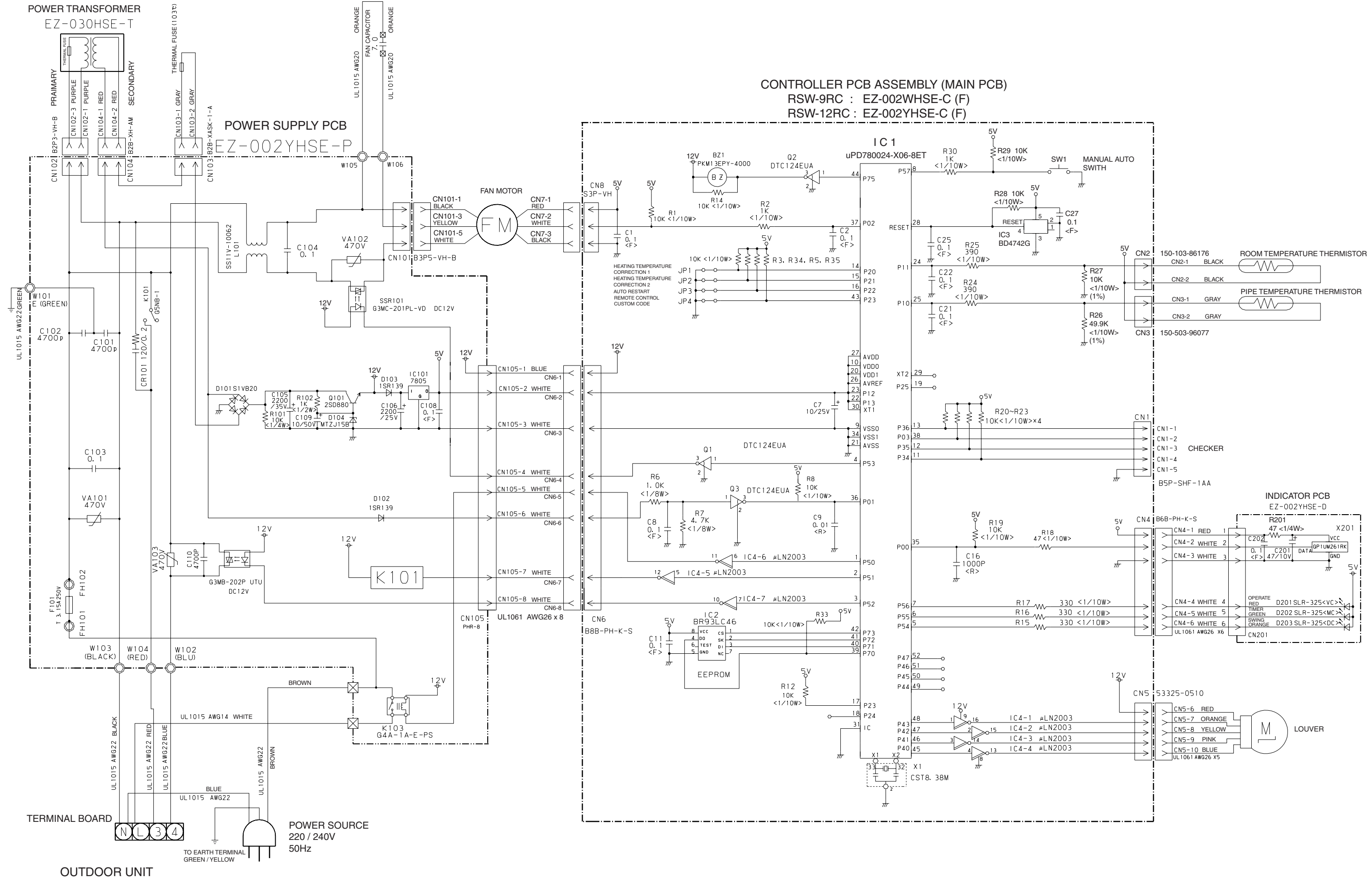
Models : RSW-9RC  
RSW-12RC



Models : ROW-9RC  
ROW-12RC



# INDOOR PRINTED CIRCUIT BOARD CIRCUIT DIAGRAM





# ERROR DISPLAY

Troubleshooting check table

Operation lamp : Red lamp  
 Timer lamp : Green lamp

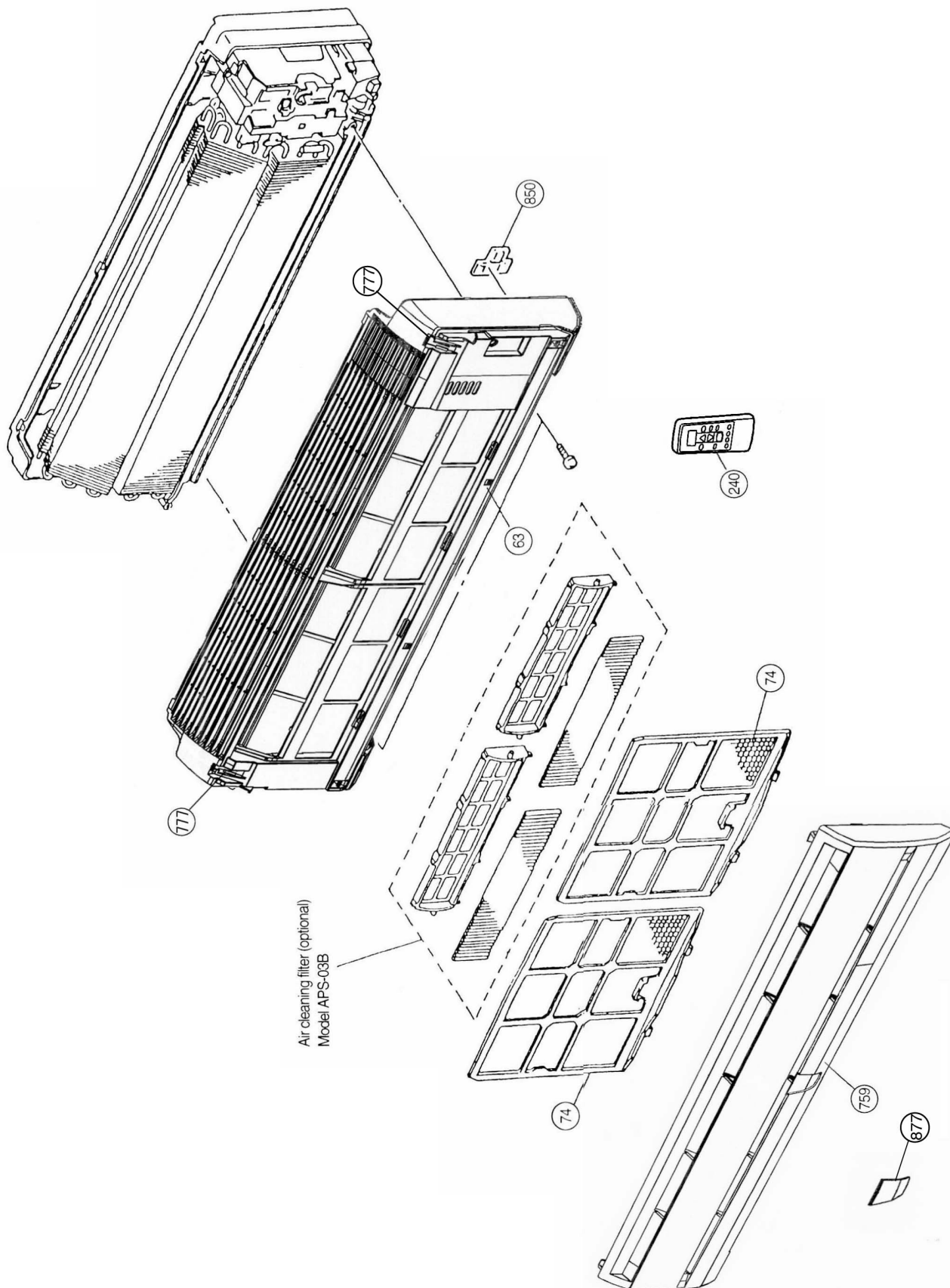
Large division indication			Small division indication		
Error contents	LED indication		Error contents	LED indication	
thermistor error	RED lamp	● (2 times)	thermistor error (room temp.)	RED lamp	○
	Green lamp	○	thermistor error (heat exchanger)	Green lamp	● (2 times)
control unit error (indoor unit )	RED lamp	● (4 times)	MANUAL AUTO button error	RED lamp	○
	Green lamp	○	power source Hz decision error	Green lamp	● (2 times)
fan motor error (indoor unit)	RED lamp	● (6 times)	lock error	RED lamp	○
	Green lamp	○	rpm error	Green lamp	● (2 times)
				RED lamp	○
				Green lamp	● (3 times)

● : 0.5s ON/OFF repeated

○ : 0.1s ON/OFF repeated

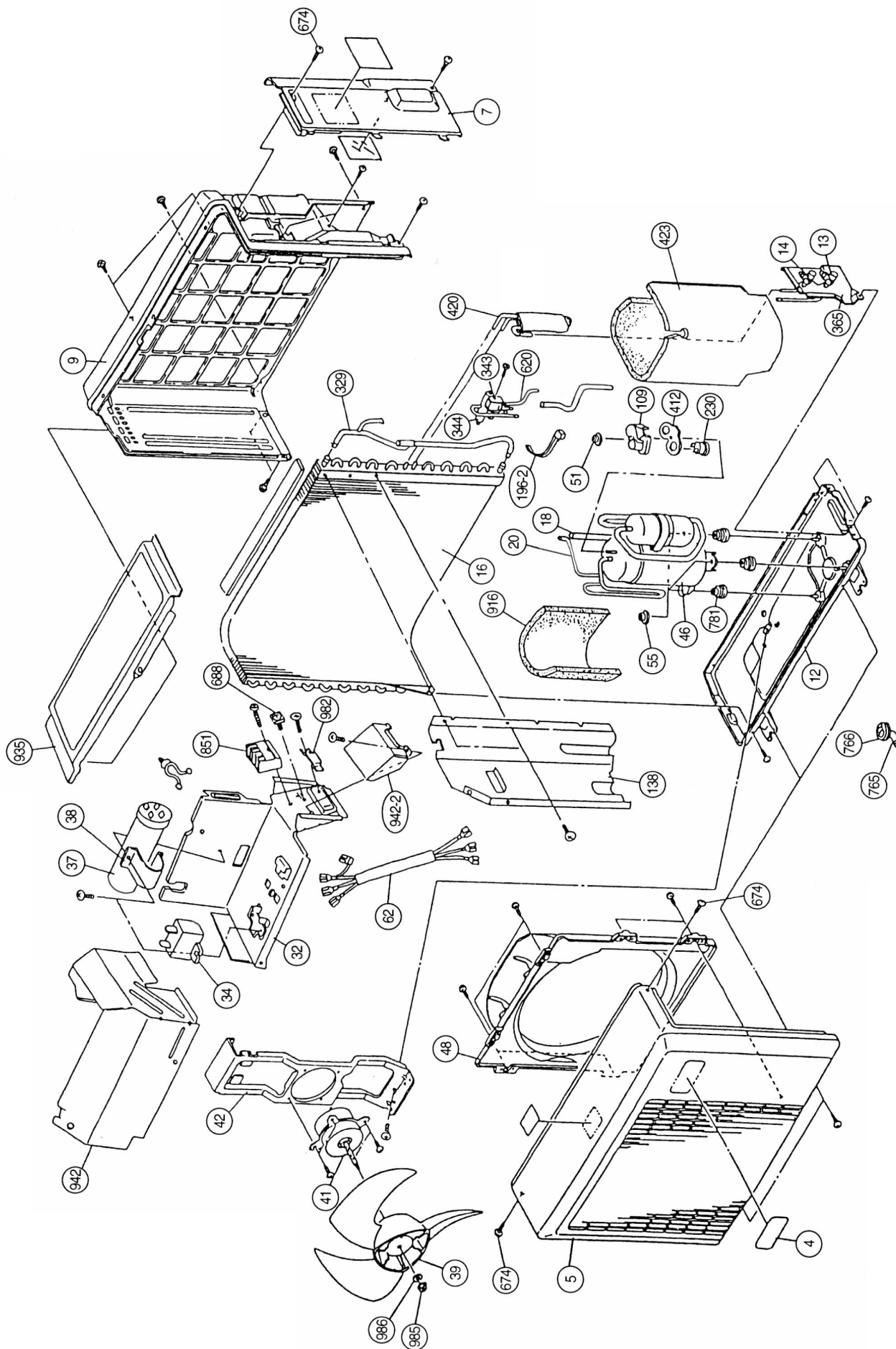
# DISASSEMBLY ILLUSTRATION

Models : RSW-9RC  
RSW-12RC

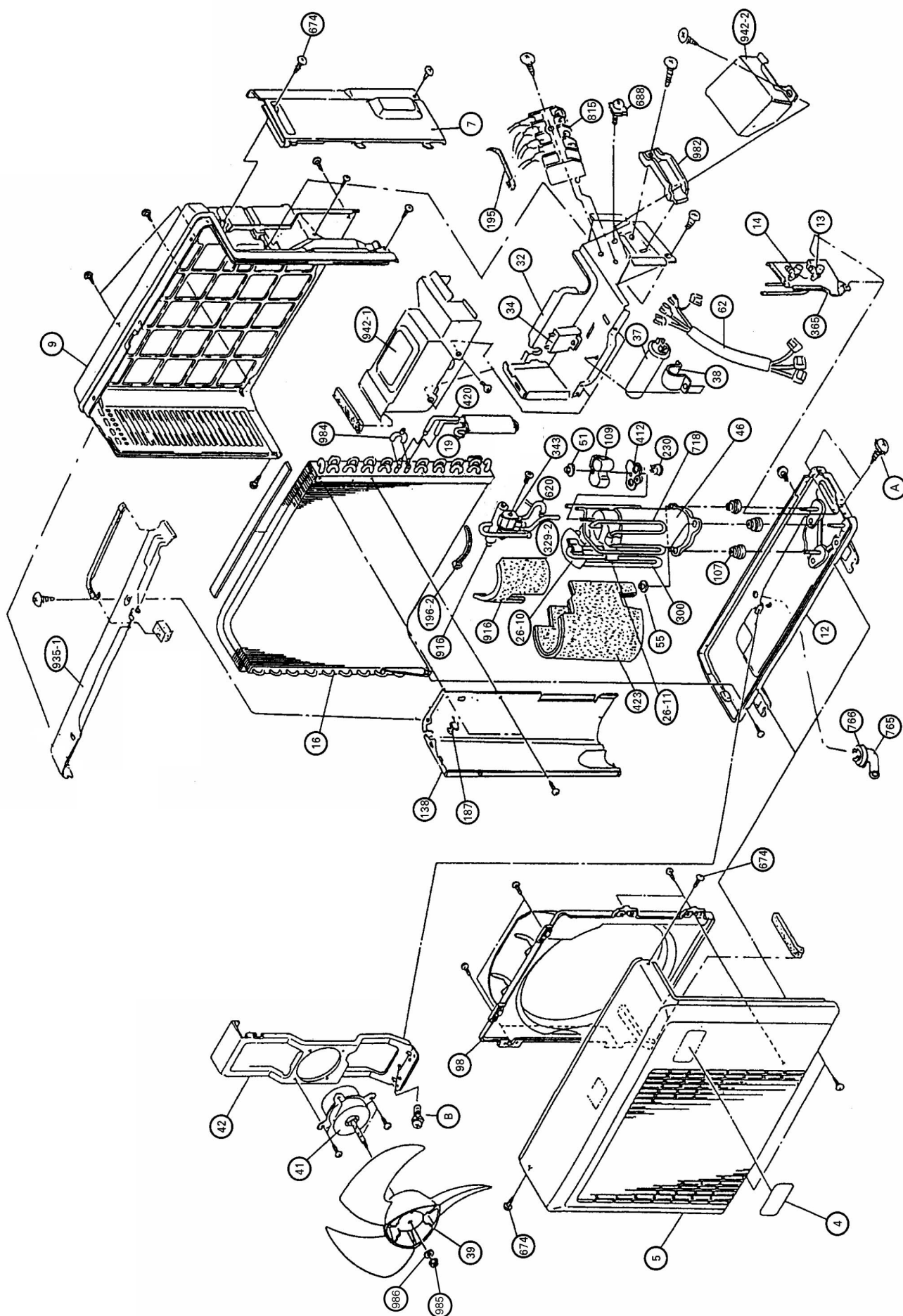




**Model : ROW-9RC**



Model : ROW-12RC



# PARTS LIST

## INDOOR UNIT

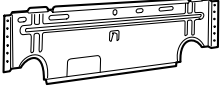


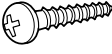



Ref. No.	Description	Part No.		Ord.
		RSW-9RC	RSW-12RC	Q`ty
34	Capacitor (Fan Motor)	9900089061	9900089061	
63	Panel (Front) Total Assy	9312417025	9312417018	
65	Flow Control Panel-Z	9306058012	9306058012	
69	Louver-A	9306055028	9306055028	
74	Filter	9305444014	9305444014	
108	Base	9309755062	9309755062	
109	Casing	9306052027	9306052027	
122	Shaft Holder -B	9303066010	9303066010	
127	Drain Hose Assy	9305550029	9305550029	
146	Evaporator Assy	9308555069	9308555069	
151	Control Box	9330007017	9330007017	
158	Connecting Pipe Assy	9306416010	9306699000	
164	Fan Motor Assy-IN	9601172017	9601172017	
169	Cross-Flow Fan Assy	9305435012	9305435012	
178	Motor Cushion -M	9601302018	9601302018	
184	Thermistor Spring	313728262708	313728262708	
185	Wire Clamp	9330015012	9330015012	
188	Power Cord Assy	9702595043	9702595043	
196	Clamp SKB -150	313035356905	313035356905	
233	Power Transformer	9701803026	9701803026	
235	Thermistor Assy -Pipe	9702039059	9702039059	
236	Controller PCB Assy	9704865038	9704865014	
240	Remote Control Unit	9312058020	9312058020	
281	Clamp Metal (Pipe)	9306063009	9306063009	
283	Bushing-A	9303529010	9303529010	
323	Louver-B	9306056025	9306056025	
385	PCB (Power and Indicator)	9704870018	9704870018	
401	Wall Hook Bracket	9304358008	9304358008	
440	Flow Control Panel-U	9306057015	9306057015	
466	Clamp NK-4N	313714328805	313714328805	
522-1	Gear-A	9306062002	9306062002	
523	Gear Bracket	9306407001	9306407001	
652-1	Thermistor Holder Pipe	313714262805	313714262805	
668	Screw w/Washer	313681304205	313681304205	
687	Earth Terminal	9330012011	9330012011	
759	Intake Grill -B	9330002029	9330002029	
764	Drain Cap Assy	9304150008	9304150008	
767-1	Bottom Cover -A	9330004016	9330004016	
777	Clamper(Grille)	9306755010	9306755010	
815	Terminal	9900040048	9900040048	
850	Window (Receiver)	9330003019	9330003019	
872	Indicator Case	9330009011	9330009011	
873	Lamp Cover	9330014015	9330014015	
874	Control Box Cover	9330008014	9330008014	
876	Step Notor	9900139018	9900139018	
877	Face Panel (Front)-B	9330006041	9330006041	

## OUTDOOR UNIT

Ref. No.	Description	Part No.	Ord. Q'ty
		ROW-9RC	
4	Emblem-Rear	9306835026	
5	Cabinet Front Panel, Plastic	9306016012	
7	Connector Cover	9306018016	
9	Cabinet Rear Panel, Plastic	9306017019	
12	Base Assy, Painted	9304806042	
13	3-Way Valve Assy	9311573012	
14	2-Way Valve Assy	9311571018	
16	Condenser Assy	9311928010	
16	Condenser Sub Assy	9306936051	
18	Suction Pipe Assy	9311092001	
20	Discharge Pipe	9311090007	
32	Control Box Metal	9306475024	
34	Capacitor (Fan Motor)	9900089023	
37	Capacitor (Running)	9307588013	
38	Clamp Metal (Capacitor)	313468061808	
39	Propeller Fan	9306565015	
41	Fan Motor Assy-Out	9307095016	
42	Bracket (Motor)	9306021016	
46	Compressor Assy	9312161010	
48	Fan Ring	9306019013	
51	Special Nut M5	9312163007	
55	Special Nut M6	9307615016	
62	Wire Assy (Shield)-A	9305791026	
109	Terminal Cover	9302419008	
138	Separate Wall Metal	9306474003	
195	Clamp SKB-100	313361275805	
196-2	Clamp SKB-3MC	9305335008	
230	Overload Relay	9307750007	
343	Solenoid Coil	9970003011	
344	4-Way Valve	9970010019	
365	Bracket (Valve)	9306020026	
412	Terminal Gasket (For Comp.)	9312162000	
420	Capillary Assy	9312157013	
423	Noise Insulation -B	9311106005	
582	Discharge Pipe -SF	9306115005	
674	Screw, SUS410T + 5014	9305848010	
688	Screw w/Washer	313681304205	
781	Rubber Cushion	9312680016	
815	Terminal-4P	9306488017	
820	Joint Pipe (Capillary)	9305680009	
916	Noise Insulation -A	9311107002	
935	Reinforcement Plate	9306473006	
942	Control Box Cover Metal	9306476007	
942-2	Control Box Cover-B Metal	9305975006	
982	Cord Clamp, Plastic	9302271002	
985	Special Nut w/Washer	9304902003	
986	Special Washer	9304903000	
A	Screw	9357297002	

Ref. No.	Description	Part No.	Ord. Q'ty
		ROW-12RC	
4	Emblem-Rear	9306835026	
5	Cabinet Front Panel, Plastic	9306386016	
7	Connector Cover	9306119010	
9	Cabinet Rear Panel, Plastic	9306385019	
12	Base Assy, Painted	9306118020	
13	3-Way Valve Assy	9311535010	
14	2-Way Valve Assy	9311533016	
16	Condenser Assy	9306179007	
16	Condenser Sub Assy	9330031012	
18	Suction Pipe Assy	9308036001	
20	Discharge Pipe	9307035012	
32	Control Box Metal	9305972005	
34	Capacitor (Fan Motor)	9900089030	
37	Capacitor (Running)	9307588013	
38	Clamp Metal (Capacitor)	313468061808	
39	Propeller Fan	9305538003	
41	Fan Motor Assy-Out	9307715013	
42	Bracket (Motor)	9305536016	
46	Compressor Assy	9310712023	
51	Special Nut M5	9307091001	
55	Special Nut M6	313252257701	
62	Wire Assy (Shield)-A	9305971026	
98	Fan Ring	9305581023	
107	Rubber Seat-A	9351813017	
109	Terminal Cover	9307090004	
138	Separate Wall Metal	9305971008	
187	Clamp No.1219	313361271706	
195	Clamp SKB-100	313361275805	
196	Clamp SKB-159	313035356905	
196-2	Clamp SKB-3MC	9305335008	
230	Overload Relay	9352453007	
329	Coupling Pipe Assy	9306400002	
329-2	Coupling Pipe -C	9306433000	
343	Solenoid Coil	9970003011	
344	4-Way Valve	9970010019	
365	Bracket (Valve)	9306748012	
412	Terminal Gasket (For Comp.)	9307089008	
420	Capillary Assy	9330032019	
423	Noise Insulation -B	9306424008	
582	Discharge Pipe -SF	9306115005	
674	Screw, SUS410T + 5014	9305848010	
688	Screw w/Washer	313681304205	
765	Drain Pipe (L-type)	9301102000	
766	Drain Pipe Packing	9301143003	
815	Terminal-4P	9306488017	
916	Noise Insulation -A	9306362003	
935-1	Reinforcement(Cabinet Top)	9305973002	
935-2	Reinforcement -F (Cabinet Top)	9306123000	
942-1	Control Box Cover-A Metal	9308562012	
942-2	Control Box Cover-B Metal	9305975006	
946	Inlet Pipe	9306401009	
982	Cord Clamp, Plastic	9302271002	
A	Screw	9357297002	
B	Screw (with Spring Washer)	0700179013	

## STANDARD ACCESSORIES

Name and Shape	Part No.	
	RSW-9RC	RSW-12RC
Wall hook bracket 	9304358008	9304358008
Remote control unit 	9312058020	9312058020
Battery (penlight) 	0600185534	0600185534
Tapping screw (Ø4 x 25) 	0700076046	0700076046
Cloth tape 	9308117007	9308117007
Drain pipe (Including drain packing) 	9303029015	9303029015
Seal A 	-----	9304536000





MANUFACTURER :

**Fuji Denki Sosetsu Co., Ltd.**

Tokyo, Japan

0304G2249



**Большая библиотека технической документации**

<https://splitsystema48.ru/instrukcii-po-ekspluatácii-kondicionerov.html>

**каталоги, инструкции, сервисные мануалы, схемы.**